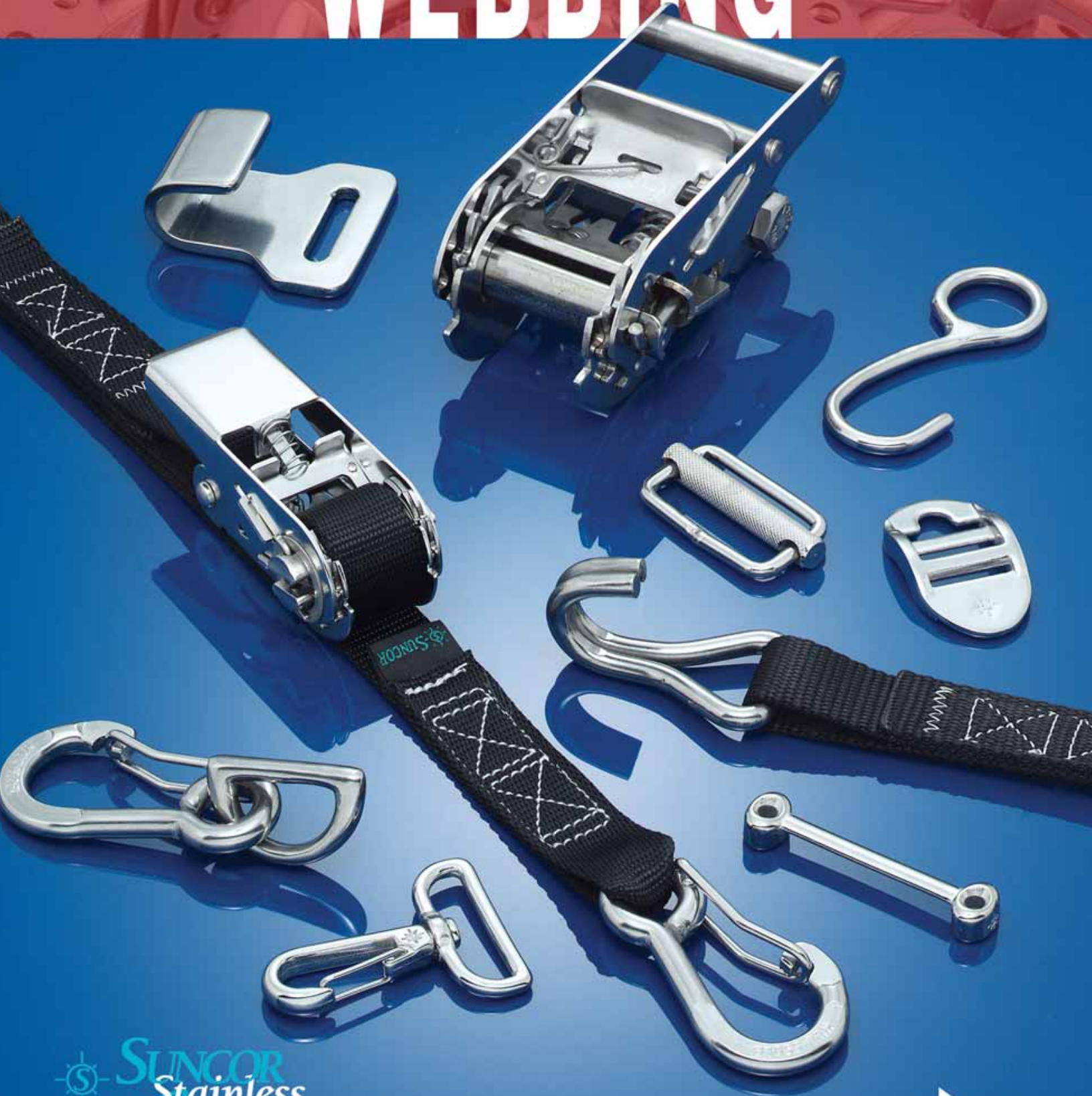


SUNCOR STAINLESS, INC.

WEBBING



www.suncorstainless.com

RATCHET BUCKLE 304 STAINLESS STEEL



| ITEM | WEBBING | WIDTH | LENGTH | HEIGHT | WLL | WT |
|-------------------|---------|---------|--------|--------|-------|------|
| | | (width) | | | (lb) | (lb) |
| S0201-0025 | 1" | 1.50" | 4.53" | 1.57" | 350 | 0.45 |
| HEAVY DUTY | | | | | | |
| S0203-HD38 | 1-1/2" | 2.48" | 5.87" | 2.36" | 1,320 | 1.60 |
| S0204-HD50 | 2" | 3.00" | 6.54" | 2.44" | 1,670 | 2.18 |

NOTE:
EACH RATCHET BUCKLE CHANGES IN APPEARANCE. THE HANDLE GETS BIGGER AS THE SIZE INCREASES. RATCHET BUCKLES HAVE DUAL LOCKS.
HD MODELS ALSO FEATURE PATENTED "HANDLE DOWN" LOCK. RATCHET BUCKLES OFFER THE TIGHTEST GRIP AND THE EASIEST ADJUSTMENT.

RATCHET ASSEMBLY W/CLIPS 304 AND 316 STAINLESS STEEL & WEBBING



| ITEM | WEBBING | LENGTH | LENGTH | WLL | WT | |
|------------|---------|---------|-----------|-------------|------|------|
| | | (width) | (overall) | (fixed end) | (lb) | (lb) |
| S0201-0525 | 1" | 5' | 12" | 350 | 0.92 | |
| S0201-1025 | 1" | 10' | 12" | 350 | 1.05 | |
| S0201-2025 | 1" | 20' | 12" | 350 | 1.32 | |

NOTE:
WEBBING IS HIGH QUALITY NYLON. CLIPS ARE ITEM S0184-0080, FORGED END AND STAMPED WITH WLL. FOR MORE SPECIFICATIONS, SEE PRODUCT ON PAGE 48.
FOR BUCKLE SPECIFICATIONS, SEE ITEM S0201-0025 ABOVE.
ALSO AVAILABLE IN WHITE ON SPECIAL ORDER.

RATCHET ASSEMBLY W/HOOKS 304 AND 316 STAINLESS STEEL & WEBBING



| ITEM | WEBBING | LENGTH | LENGTH | WLL | WT | |
|-------------|---------|---------|-----------|-------------|------|------|
| | | (width) | (overall) | (fixed end) | (lb) | (lb) |
| S0201-J0525 | 1" | 5' | 12" | 350 | 0.89 | |
| S0201-J1025 | 1" | 10' | 12" | 350 | 1.02 | |

NOTE:
WEBBING IS HIGH QUALITY NYLON. "J" HOOKS ARE ITEM S0211-0025. FOR MORE SPECIFICATIONS, SEE PRODUCT ON PAGE 54.
FOR BUCKLE SPECIFICATIONS, SEE ITEM S0201-0025 ABOVE.

RATCHET ASSEMBLY W/HOOKS 304 STAINLESS STEEL & WEBBING



| ITEM | WEBBING | LENGTH | LENGTH | WLL | WT | |
|-------------|---------|---------|-----------|-------------|------|------|
| | | (width) | (overall) | (fixed end) | (lb) | (lb) |
| S0201-S0525 | 1" | 5' | 12" | 200 | 0.85 | |
| S0201-S1025 | 1" | 10' | 12" | 200 | 0.98 | |

NOTE:
WEBBING IS HIGH QUALITY NYLON. WELDED S HOOK PREVENTS WEBBING FROM SLIPPING OUT. "S" HOOKS ARE ITEM S0212-0025. FOR MORE SPECIFICATIONS, SEE PRODUCT ON PAGE 54.
FOR RATCHET BUCKLE SPECIFICATIONS, SEE ITEM S0201-0025 ABOVE.

HEAVY DUTY RATCHET ASSEMBLY 304 AND 316 STAINLESS STEEL & WEBBING



| ITEM | WEBBING | LENGTH | LENGTH | WLL | WT | |
|------------|---------|---------|-----------|-------------|------|------|
| | | (width) | (overall) | (fixed end) | (lb) | (lb) |
| S0203-0538 | 1-1/2" | 5' | 14" | 1,100 | 2.46 | |
| S0203-1038 | 1-1/2" | 10' | 14" | 1,100 | 2.66 | |
| S0203-2038 | 1-1/2" | 20' | 14" | 1,100 | 3.00 | |

NOTE:
HIGHEST QUALITY ASSEMBLY, USE WHERE A LOCKED HOOK IS PREFERABLE. WEBBING IS HIGH QUALITY NYLON. CLIPS ARE ITEM S0184-0100, FORGED END AND STAMPED WITH WLL. FOR MORE SPECIFICATIONS, SEE PRODUCT ON PAGE 48.
FOR RATCHET BUCKLE SPECIFICATIONS, SEE ITEM S0203-HD38 ABOVE.



Key:



ORDERS ONLY: 800-394-2222 (USA)
877-495-5510 (CANADA)

EXTRA HD RATCHET ASSEMBLY 304 AND 316 STAINLESS STEEL & WEBBING



| ITEM | WEBBING (width) | LENGTH (overall) | LENGTH (fixed end) | WLL (lb) | WT (lb) |
|------------|--------------------|---------------------|-----------------------|-------------|------------|
| S0204-0550 | 2" | 5' | 17" | 1,540 | 3.84 |
| S0204-1050 | 2" | 10' | 17" | 1,540 | 4.13 |
| S0204-2050 | 2" | 20' | 17" | 1,540 | 4.62 |

NOTE:
HIGHEST QUALITY ASSEMBLY, USE WHERE A LOCKED HOOK IS PREFERABLE. OTHER LENGTHS AND WHITE ARE AVAILABLE ON SPECIAL ORDER. WEBBING IS HIGH QUALITY NYLON.

CLIPS ARE ITEM S0184-0120, FORGED END AND STAMPED WITH WLL. FOR MORE SPECIFICATIONS, SEE PRODUCT ON PAGE 48. FOR BUCKLE SPECIFICATIONS, SEE ITEM S0204-HD50 ON THE PREVIOUS PAGE.



MINI BUCKLE 304 STAINLESS STEEL CAM BUCKLE 316 STAINLESS STEEL



| ITEM | WEBBING | A (width) | B (length) | C (height) | WLL (lb) | WT (lb) |
|-------------------------|---------|--------------|---------------|---------------|-------------|------------|
| MINI OVER-CENTER | | | | | | |
| S0207-0026 | 1" | 1.43" | 2.56" | 1.06" | 400 | 0.33 |
| CAM BUCKLE | | | | | | |
| S0205-0025 | 1" | 1.19" | 1.74" | 0.48" | 100 | 0.10 |

NOTE:
MOST COMPACT STAINLESS OVER-CENTER BUCKLE AVAILABLE ON THE MARKET. IDEAL FOR BOAT COVER TIE-DOWNS AND MANY OTHER USES. CAM BUCKLE AVAILABLE FOR LIGHT-DUTY WEBBING APPLICATIONS.

S0207-0026

S0205-0025

OVER-CENTER BUCKLE 304 STAINLESS STEEL



| ITEM | WEBBING | WIDTH | LENGTH | HEIGHT | WLL (lb) | WT (lb) |
|------------|---------|-------|--------|--------|-------------|------------|
| S0207-0025 | 1" | 1.39" | 3.69" | 0.74" | 300 | 0.14 |
| S0207-0050 | 2" | 2.45" | 7.16" | 1.06" | 600 | 0.57 |

NOTE:
GOOD GRIP BUT NOT AS EASY TO ADJUST AS A RATCHET BUCKLE. COMES WITH THREADING DIRECTIONS. OVER-CENTER BUCKLES CAN BE SURFACE MOUNTED.

OVER-CENTER ASSEMBLY W/CLIPS 304/316 STAINLESS STEEL & WEBBING



| ITEM | A (width) | B (overall) | LENGTH (fixed end) | WLL (lb) | WT (lb) |
|------------|--------------|----------------|-----------------------|-------------|------------|
| S0207-0525 | 1" | 5' | 12" | 300 | 0.60 |
| S0207-1025 | 1" | 10' | 12" | 300 | 0.75 |
| S0207-0550 | 2" | 5' | 17" | 600 | 2.32 |
| S0207-1050 | 2" | 10' | 17" | 600 | 2.48 |

NOTE:
CLIPS ARE ITEM S0184-0120 ON PAGE 48. FOR BUCKLE SPECIFICATIONS, SEE ITEM S0207-0050 ABOVE.



COVER TIE-DOWN KIT 304 STAINLESS STEEL & WEBBING



| ITEM | A (total length) | HOOK (part number) | WLL (lb) | WT (lb) |
|------------|---------------------|-----------------------|-------------|------------|
| S0280-0004 | 4 FT. | 2 - S0212-0025 | 170 | 0.48 |
| S0280-0008 | 8 FT. | 2 - S0212-0025 | 170 | 0.64 |
| S0280-0012 | 12 FT. | 2 - S0212-0025 | 170 | 0.80 |
| S0280-0016 | 16 FT. | 2 - S0212-0025 | 170 | 0.96 |

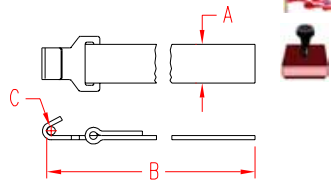
NOTE:
TOTAL STRAP LENGTH IS DIVIDED INTO 2 STRAPS WITH A WELDED "S" HOOK (S0212-0025 SEE P. 54) ON EACH WITH 1" STAR ADJUSTER™ (S0217-0025 SEE P. 84).

WEBBING IS 1" WIDE AND IS HIGH QUALITY NYLON. HOOKS AND ADJUSTER ARE STAINLESS STEEL. CAN BE USED ON BOAT COVERS, TARPS AND OTHER APPLICATIONS.



WEBBING WITH FLAT HOOK

304 STAINLESS STEEL & WEBBING



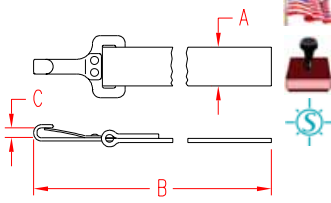
| ITEM | A | B | C | WLL | WT |
|------------|---------|----------|------|------|------|
| | (width) | (length) | | (lb) | (lb) |
| S0233-0002 | 1" | 24" | 0.25 | 350 | 0.12 |
| S0233-0005 | 1" | 60" | 0.25 | 350 | 0.24 |

NOTE:
OTHER WEBBING LENGTHS ARE AVAILABLE ON SPECIAL ORDER.
WEBBING IS HIGH QUALITY NYLON. FLAT HOOKS ARE ITEM S0210-0025. FOR MORE SPECIFICATIONS, SEE PRODUCT ON PAGE 82.



WEBBING WITH BIMINI HOOK

304 STAINLESS STEEL & WEBBING



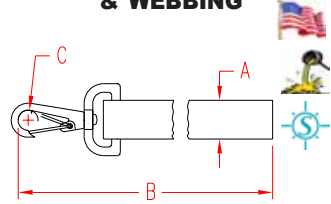
| ITEM | A | B | C | WLL | WT |
|------------|---------|----------|-------|------|------|
| | (width) | (length) | | (lb) | (lb) |
| S0234-0004 | 1" | 48" | 0.20" | 70 | 0.13 |

NOTE:
OTHER WEBBING LENGTHS ARE AVAILABLE ON SPECIAL ORDER.
WEBBING IS HIGH QUALITY NYLON. BIMINI HOOKS ARE ITEM S0220-0025. FOR MORE SPECIFICATIONS, SEE PRODUCT ON PAGE 83.



WEBBING WITH SWIVEL HOOK

316 STAINLESS STEEL & WEBBING



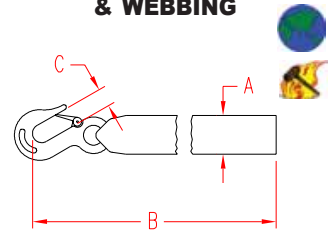
| ITEM | A | B | C | WLL | WT |
|------------|---------|----------|-------|------|------|
| | (width) | (length) | | (lb) | (lb) |
| S0235-0004 | 1" | 48" | 0.41" | 130 | 0.18 |

NOTE:
OTHER WEBBING LENGTHS ARE AVAILABLE ON SPECIAL ORDER.
WEBBING IS HIGH QUALITY NYLON. SWIVEL HOOKS ARE ITEM S0221-0025. FOR MORE SPECIFICATIONS, SEE PRODUCT ON PAGE 83.



WEBBING AND HOOK

316 STAINLESS STEEL & WEBBING



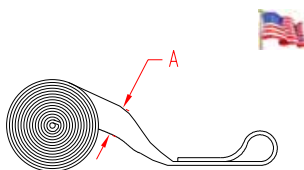
| ITEM | A | B | C | HOOK | WLL | WT |
|------------|----|--------|-------|------------|-------|------|
| | | | | | (lb) | (lb) |
| S0270-2050 | 2" | 20 FT. | 0.70" | S0454-0008 | 1,600 | 1.25 |

NOTE:
THIS ASSEMBLY IS OFFERED AS A REPLACEMENT OR AN UPGRADE FOR WINCHES USING WEBBING AND HOOK COMBINATIONS. OTHER LENGTHS OF WEBBING ARE AVAILABLE ON SPECIAL ORDER.
WEBBING IS HIGH QUALITY NYLON. HOOK (S0454-0008 ON PAGE 44) IS FORGED STAINLESS STEEL.



WEBBING WITH SEWN LOOP

WEBBING



| ITEM | A | LENGTH | WLL | WT |
|------------|----|--------|-------|------|
| | | | (lb) | (lb) |
| S0232-0002 | 1" | 24" | 1,000 | 0.08 |
| S0232-0003 | 1" | 36" | 1,000 | 0.12 |
| S0232-0004 | 1" | 48" | 1,000 | 0.16 |

NOTE:
OTHER WEBBING LENGTH OR WIDTH COMBINATIONS ARE AVAILABLE ON SPECIAL ORDER. WEBBING IS HIGH QUALITY NYLON.



Key:



Made in USA



Drop Forged



Precision Machined



Wire Formed



Suncor Exclusive



Import



Precision Cast



Stamped



Load Rated



New Product

ORDERS ONLY: 800-394-2222 (USA)
877-495-5510 (CANADA)


HANGING or STRAP KIT #1

304 STAINLESS STEEL & WEBBING



| ITEM | WEBBING LENGTH | | WLL | WT |
|------------|----------------|-----|------|------|
| | (size) | | (lb) | (lb) |
| S0236-0000 | 1" | 48" | 70 | 0.20 |

NOTE:
 THIS KIT INCLUDES 48" OF 1" WEBBING WITH A BIMINI CLIP, ONE FIXED THREADING PLATE FOR ADJUSTMENT AND A WELDED "D" RING. OTHER LENGTHS ARE AVAILABLE ON SPECIAL ORDER. WEBBING IS HIGH QUALITY NYLON.
 SEE PAGE 83 FOR BIMINI CLIP PART S0220-0025 AND THREADING PLATE S0215-0025.




HANGING or STRAP KIT #2

304 AND 316 STAINLESS STEEL & WEBBING



| ITEM | WEBBING LENGTH | | WLL | WT |
|------------|----------------|-----|------|------|
| | (size) | | (lb) | (lb) |
| S0236-0001 | 1" | 48" | 130 | 0.24 |

NOTE:
 THIS KIT INCLUDES 48" OF 1" WEBBING WITH A SWIVEL CLIP, ONE FIXED THREADING PLATE FOR ADJUSTMENT AND A WELDED "D" RING. OTHER LENGTHS ARE AVAILABLE ON SPECIAL ORDER. WEBBING IS HIGH QUALITY NYLON.
 SEE PAGE 83 FOR SWIVEL CLIP PART S0221-0025 AND THREADING PLATE S0215-0025.




HANGING or STRAP KIT #3

316 STAINLESS STEEL & WEBBING



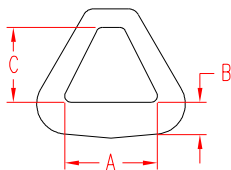
| ITEM | WEBBING LENGTH | | WLL | WT |
|------------|----------------|-----|------|------|
| | (size) | | (lb) | (lb) |
| S0236-0002 | 1" | 48" | 130 | 0.26 |

NOTE:
 THIS KIT INCLUDES 48" OF 1" WEBBING WITH A SWIVEL CLIP AND THE STAR ADJUSTER. OTHER LENGTHS ARE AVAILABLE ON SPECIAL ORDER. WEBBING IS HIGH QUALITY NYLON.
 SEE PAGE 84 FOR STAR ADJUSTER™ PART S0217-0025 AND THREADING PLATE S0215-0025.



DELTA OR HARNESS LINK

304 STAINLESS STEEL

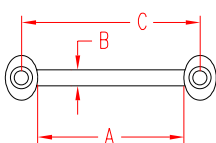


| ITEM | A | B | C | D | WLL | WT |
|------------|--------|-------|-------|-------|-------|------|
| | (size) | | | | (lb) | (lb) |
| S0213-0050 | 2" | 0.55" | 1.90" | 1.55" | 1,200 | 0.21 |

NOTE:
 MATERIAL THICKNESS IS .20
 WORKING LOADS ARE BASED ON "A" LENGTH BEING USED IN FULL AND NOT UNDER POINT OR SHOCK LOAD.


FOOTMAN'S LOOP

316 STAINLESS STEEL



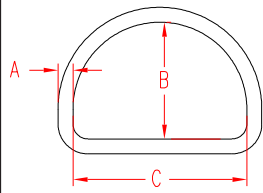
| ITEM | A | B | C | FAST. | WLL | WT |
|------------|--------|------|-------|-------------|------|------|
| | (size) | | | | (lb) | (lb) |
| S0224-0025 | 1" | .24" | 1.48" | # 10 Screws | 400 | 0.04 |
| S0224-0050 | 2" | .24" | 2.48" | # 10 Screws | 400 | 0.05 |

NOTE:
 CAN BE USED HORIZONTALLY OR VERTICALLY. PATENTED, "NO SNAG" DESIGN. USE FLAT HOOK S0210-0025 TO ATTACH WEBBING OR SLIP THE WEBBING WITH SEWN LOOP (S0232-SERIES, PAGE 80) OVER THE FITTING BEFORE TIGHTENING ATTACHMENT.




DEE RING

316 STAINLESS STEEL

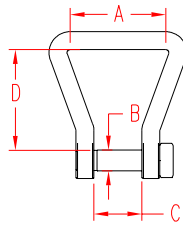


| ITEM | A | B | C | WLL | WT |
|------------|--------|-------|-------|------|------|
| | (size) | | | (lb) | (lb) |
| S0139-X325 | 1/8" | 0.88" | 1.00" | 100 | 0.01 |
| S0139-X525 | 3/16" | 0.88" | 1.00" | 300 | 0.04 |
| S0139-X540 | 3/16" | 1.47" | 1.50" | 300 | 0.05 |
| S0139-X625 | 1/4" | 0.90" | 1.00" | 500 | 0.06 |
| S0139-X640 | 1/4" | 1.52" | 1.50" | 500 | 0.08 |
| S0139-X650 | 1/4" | 2.00" | 2.00" | 500 | 0.10 |
| S0139-X850 | 5/16" | 1.95" | 2.00" | 800 | 0.18 |
| S0139-X865 | 5/16" | 2.50" | 2.50" | 800 | 0.22 |
| S0139-X875 | 5/16" | 2.63" | 3.00" | 800 | 0.24 |

NOTE: WORKING LOADS ARE BASED ON "C" LENGTH BEING USED IN FULL BY WEBBING, AND NOT UNDER POINT OR SHOCK LOAD.

WEBBING SHACKLE

316 STAINLESS STEEL



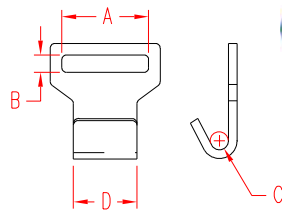
| ITEM | A | B | C | D | WLL | WT |
|------------|--------|-------|-------|-------|------|------|
| | (size) | | | | (lb) | (lb) |
| S0231-0025 | 1" | 0.19" | 0.33" | 1.14" | 200 | 0.03 |

NOTE: PATENTED "NO SNAG" DESIGN. CAN BE USED IN COMBINATION WITH WALL CLIP S0230-0000 ON PAGE 83: PIN FITS THROUGH HOLE IN CLIP. USE WITH FLAT WEB HOOK (SHOWN BELOW) OR WITH WEBBING WITH SEWN LOOP (S0232-SERIES) ON PAGE 80. COMPATIBLE WITH SWIVEL PAD EYE.



FLAT WEB HOOK

304 STAINLESS STEEL

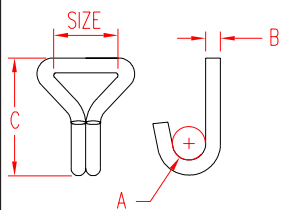


| ITEM | SIZE | A | B | C | D | WLL | WT |
|------------|--------|------|-------|-------|-------|-------|------|
| | | | | | | (lb) | (lb) |
| S0210-0025 | 1" | 1.24 | 0.13" | 0.25" | 0.94" | 350 | 0.04 |
| S0210-0038 | 1-1/2" | 1.56 | 0.28" | 0.63" | 1.70" | 1,000 | 0.44 |
| S0210-0050 | 2" | 1.97 | 0.30" | 0.63" | 1.70" | 1,500 | 0.43 |

NOTE: USE TO ATTACH TO TRAILER FRAME OR S0210-0025 TO FOOTMAN'S LOOP (S0224-SERIES) ON PAGE 81.

DOUBLE "J" WEB HOOK

304 STAINLESS STEEL

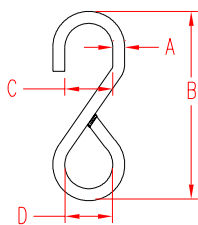


| ITEM | SIZE | A | B | C | D | WLL | WT |
|------------|--------|-------|-------|-------|---|-------|------|
| | | | | | | (lb) | (lb) |
| S0211-0025 | 1" | 0.78" | 0.27" | 2.77" | | 400 | 0.15 |
| S0211-0038 | 1-1/2" | 0.78" | 0.38" | 3.44" | | 1,000 | 0.40 |
| S0211-0050 | 2" | 0.78" | 0.38" | 3.44" | | 1,500 | 0.41 |

NOTE: FOR ANCHOR AND PAD EYES, SEE PAGES 85 TO 90.

WELDED "S" WEB HOOK

316 STAINLESS STEEL



| ITEM | SIZE | A | B | C | D | WLL | WT |
|------------|--------|-------|-------|-------|-------|------|------|
| | | | | | | (lb) | (lb) |
| S0212-0025 | 1" | 0.25" | 4.00" | 1.00" | 1.00" | 200 | 0.12 |
| S0212-0038 | 1-1/2" | 0.31" | 4.50" | 1.50" | 1.50" | 300 | 0.22 |
| S0212-0050 | 2" | 0.38" | 6.18" | 2.25" | 2.00" | 400 | 0.46 |

NOTE: QUALITY "S" HOOK IS WELDED TO PREVENT WEBBING FROM SLIPPING THROUGH. BULK ORDERS OF OTHER SIZES OR TYPES MAY BE PLACED ON SPECIAL ORDER. FOR ANCHOR AND PAD EYES, SEE PAGES 85 TO 90.



Key:



Made in USA



Drop Forged



Precision Machined



Wire Formed



Suncor Exclusive



Import



Precision Cast



Stamped



Load Rated

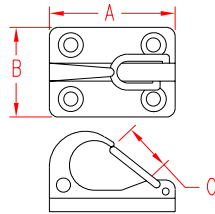


New Product

ORDERS ONLY: 800-394-2222 (USA)
877-495-5510 (CANADA)

WALL OR CEILING CLIP

316 STAINLESS STEEL



| ITEM | A | B | C | FAST. | WLL | WT |
|------------|----------|-------|------|-------------|------|------|
| | (length) | | | | (lb) | (lb) |
| S0230-0000 | 1.77" | 1.25" | 0.26 | # 10 Screws | 350 | 0.14 |

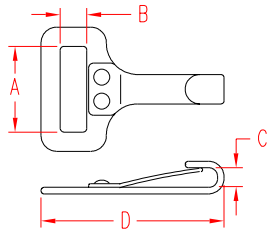
NOTE:
HAS SPECIAL HOLE TO ALLOW COMBINATION WITH WEBBING SHACKLE (S0231-0025) ON PAGE 82. CLIP CAN ALSO BE USED WITH OTHER TIE-DOWN COMPONENTS TO SECURE LARGER OBJECTS SUCH AS HOSES, ROPES, CANOES, ETC. SEE PAGE 84 FOR EXAMPLES.

SEE RATCHET BUCKLES AND OUR LINE OF WEBBING/TIE-DOWN HARDWARE IN THIS SECTION.



FIXED BIMINI CLIP

304 STAINLESS STEEL



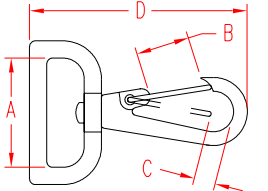
| ITEM | A | B | C | D | WLL | WT |
|------------|--------|-------|-------|-------|------|------|
| | (size) | | | | (lb) | (lb) |
| S0220-0025 | 1" | 0.23" | 0.20" | 1.94" | 70 | 0.03 |

NOTE:
SEE COMBINATIONS ON PAGE 80 AND 81 FOR READY-MADE ASSEMBLIES.
FOR ANCHOR AND PAD EYES, SEE PAGES 85 TO 90.



SWIVEL WEB CLIP

304 STAINLESS STEEL



| ITEM | A | B | C | D | WLL | WT |
|------------|--------|-------|-------|-------|------|------|
| | (size) | | | | (lb) | (lb) |
| S0221-0025 | 1" | 0.63" | 0.32" | 2.56" | 130 | 0.07 |
| S0221-0038 | 1-1/2" | 0.63" | 0.32" | 2.63" | 130 | 0.08 |
| S0221-0050 | 2" | 0.63" | 0.32" | 2.71" | 130 | 0.10 |

NOTE:
NEW "SLIMLINE" BAIL FOR WEBBING. SPECIAL TORSION SPRING GATE FOR LONGER LIFE. COMBINATION POSSIBLE WITH STAR ADJUSTER™ (S0217-0025, PAGE 84).

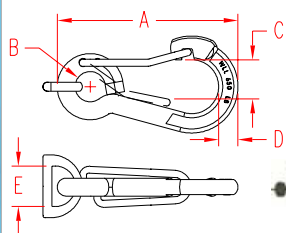
SEE COMBINATIONS ON PAGE 80 AND 81 FOR READY-MADE ASSEMBLIES.

FOR ANCHOR AND PAD EYES, SEE PAGES 85 TO 90.



HARNESS CLIP WITH D RING

316 STAINLESS STEEL



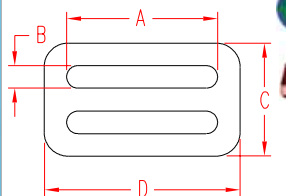
| ITEM | A | B | C | D | E | WLL | WT |
|------------|--------|-------|-------|-------|-------|------|------|
| | (size) | | | | | (lb) | (lb) |
| S0223-8025 | 3-1/4" | 0.52" | 0.56" | 0.31" | 1.00" | 650 | 0.20 |

NOTE:
"D" RING IS FORGED, AND CLIPS ARE FORMED WITH FORGED END AND STAMPED WITH WLL.



FIXED THREADING PLATE

304 STAINLESS STEEL



| ITEM | A | B | C | D | WLL | WT |
|------------|--------|-------|-------|-------|------|------|
| | (size) | | | | (lb) | (lb) |
| S0215-0025 | 1" | 0.15" | 0.68" | 1.28" | 150 | 0.03 |
| S0215-0038 | 1-1/2" | 0.24" | 1.18" | 2.04" | 200 | 0.05 |
| S0215-0050 | 2" | 0.25" | 1.25" | 2.50" | 250 | 0.07 |
| S0215-L050 | 2" | 0.17" | 0.87" | 2.36" | 100 | 0.04 |

NOTE:
HIGH QUALITY THREADING PLATE MADE FROM THICK STAINLESS PLATE.
L050 IS NARROW TYPE PLATE (NOT SHOWN) FOR LIGHTER DUTY.

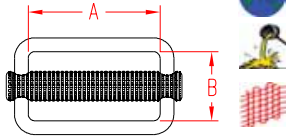


TEL 508-732-9191 • FAX 508-732-9798 • ORDERS ONLY 800-394-2222

www.suncorstainless.com

ADJUSTABLE SLIDE

316 STAINLESS STEEL

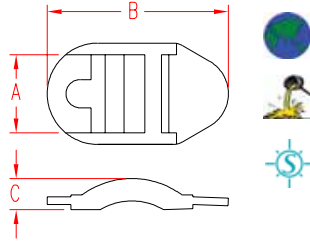


| ITEM | A | B | WLL | WT |
|------------|--------|-------|------|------|
| | (size) | | (lb) | (lb) |
| S0216-0025 | 1" | 0.75" | 350 | 0.05 |
| S0216-0045 | 1-3/4" | 0.87" | 400 | 0.12 |
| S0216-0050 | 2" | 0.87" | 500 | 0.14 |

NOTE:
FEATURES KNURLED BAR, FREE SLIDING FROM SIDE TO SIDE INSIDE A HIGH QUALITY, WELDED RECTANGLE. SEW WEBBING ON WELDED SIDE AND USE OTHER SIDE FOR ADJUSTMENT.

STAR ADJUSTER™

316 STAINLESS STEEL



| ITEM | A | B | C | WLL | WT |
|------------|--------|-------|----------|------|------|
| | (size) | | (height) | (lb) | (lb) |
| S0217-0025 | 1" | 2.41" | 0.42" | 500 | 0.09 |

NOTE:
HIGHEST QUALITY ADJUSTER FEATURES TEETH ON BACK TO SECURELY HOLD WEBBING. ROUND RECESS WILL ACCEPT SWIVEL WEB CLIP S0221-0025, PAGE 83.

FOR READY-MADE ASSEMBLY, SEE ITEM C0237-0000 BELOW.



TIDY STRAP

316 STAINLESS STEEL & WEBBING



| ITEM | A | B | WLL | WT |
|------------|--------|----------|------|------|
| | (size) | (length) | (lb) | (lb) |
| C0237-0000 | 1" | 48" | 350 | 0.38 |

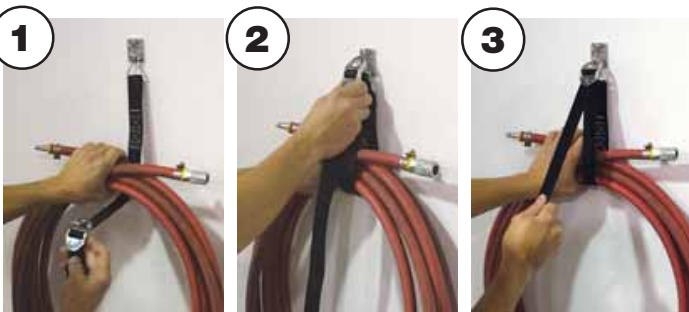
NOTE:
END OF WEBBING IS SECURED TO WALL & CEILING CLIP (S0230-0000, PAGE 83) USING SUNCOR'S WEBBING SHACKLE (S0231-0025) ON PAGE 82.

ASSEMBLY UTILIZES HIGHEST QUALITY ADJUSTER (ABOVE), WHICH FEATURES TEETH ON BACK TO SECURELY HOLD WEBBING. ADJUSTER CLIPS INTO THE WALL & CEILING CLIP ON PAGE 83. WLL IS FOR ASSEMBLY ONLY AND EXCLUDES FASTENERS.

Solution for "Clearing the Decks"

Get organized with Suncor's new "Tidy Strap". Ideal for use in homeowner's garage or workshop or for clearing the decks on commercial and luxury boats. Heavy-duty cast stainless components and high quality webbing ensure items will stay secure until needed. The "Tidy Strap" is a much safer and more attractive solution for organizing. Hanging items from hooks or nails is dangerous. Items are not fully secured and bodily harm may occur if they are placed in traffic areas.

3 Easy Steps



1 Loop Around

2 Clip

3 Pull

Endless Possibilities

Suncor offers a wide variety of compatible webbing components. All are high quality stainless steel, ensuring years of use and corrosion resistance. Secure tools, cords, hoses, rope, etc. Fasten hardware sideways to secure scuba tanks, table umbrella, pipes, lumber, etc. With Suncor the possibilities are endless!



Variations with Footman's Loop (p.81) and Swivel Web Clip (p.83)



ORDERS ONLY: 800-394-2222 (USA)
877-495-5510 (CANADA)

Key:

